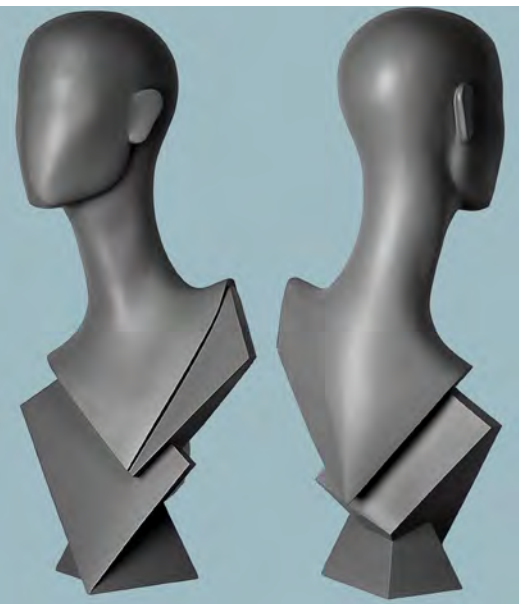


ACCESSORIES

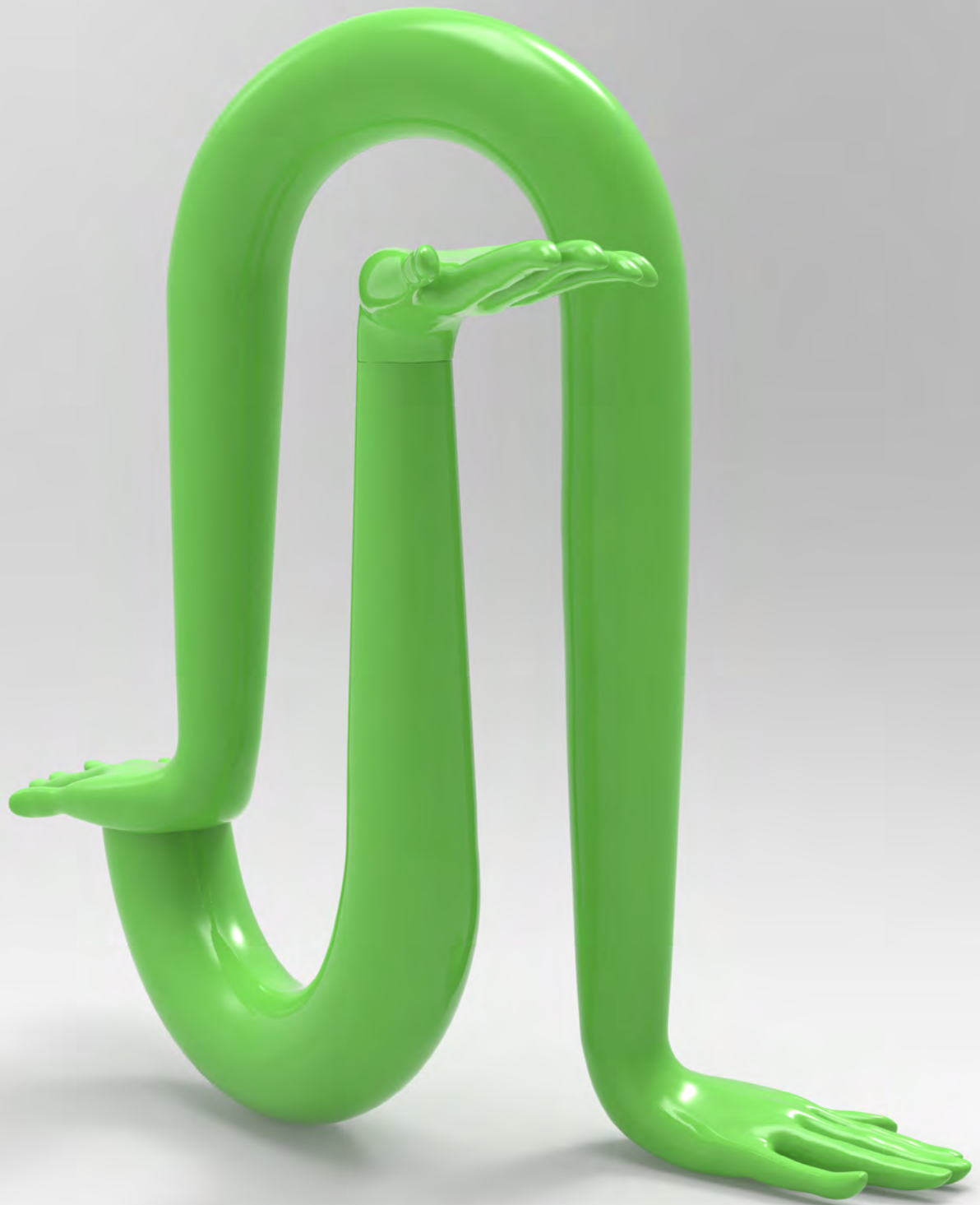




LOOP









SLA1
H 78cm 31"
L 69cm 27"
W 26cm 10"



SLA2
H 75cm 30"
L 50cm 20"
W 18cm 7"



SLA3
H 78cm 31"
L 57cm 22"
W 31cm 12"



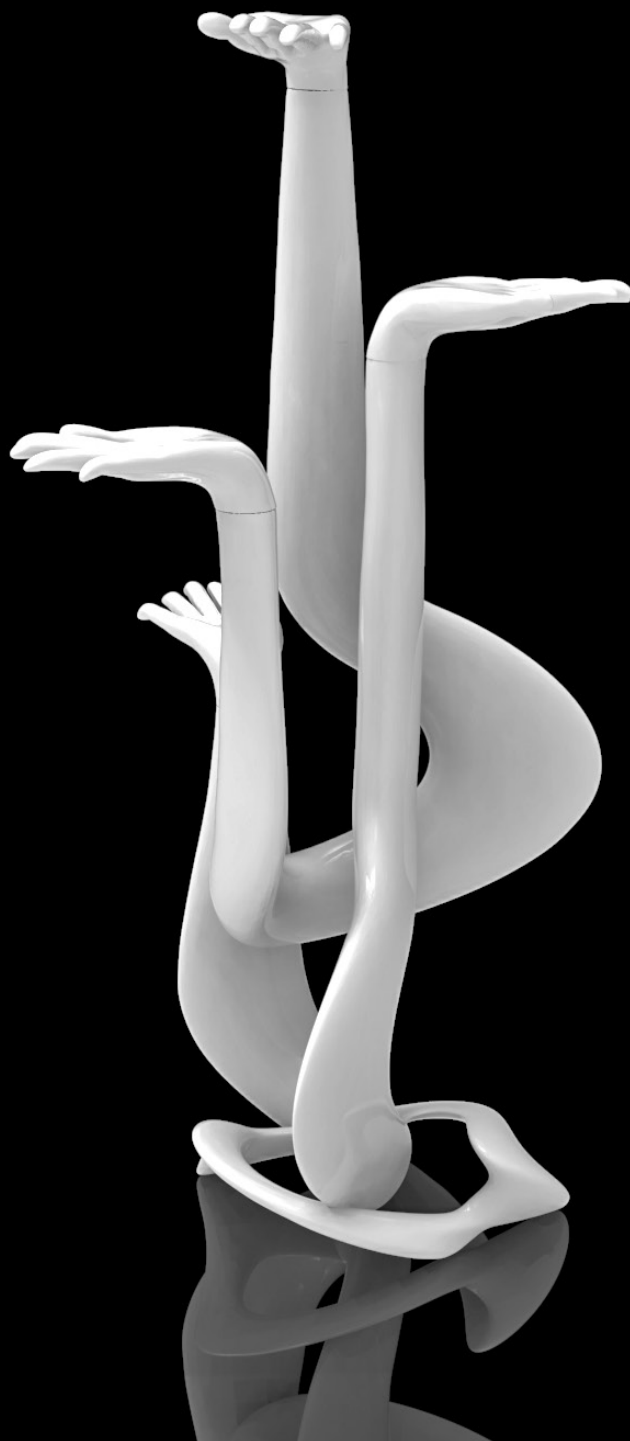
SLA4
H 61cm 24"
L 58cm 23"
W 32cm 13"



SLA5
H 92cm 36"
L 65cm 26"
W 26cm 10"



SLA6
H 92cm 36"
L 77cm 30"
W 44cm 17"



SLA7
H 87cm 34"
L 38cm 15"
W 33cm 13"

LOOP

Universal Display Fittings Co. Ltd
Unit 4 95 Victoria Road
London
NW10 6DJ
United Kingdom
Tel. 020 8206 5010
info@universaldisplay.co.uk

Universal Display & Design Inc.
368 9th Avenue
New York
10001
USA
Tel. 212 242 0374
info@universaldisplayusa.com

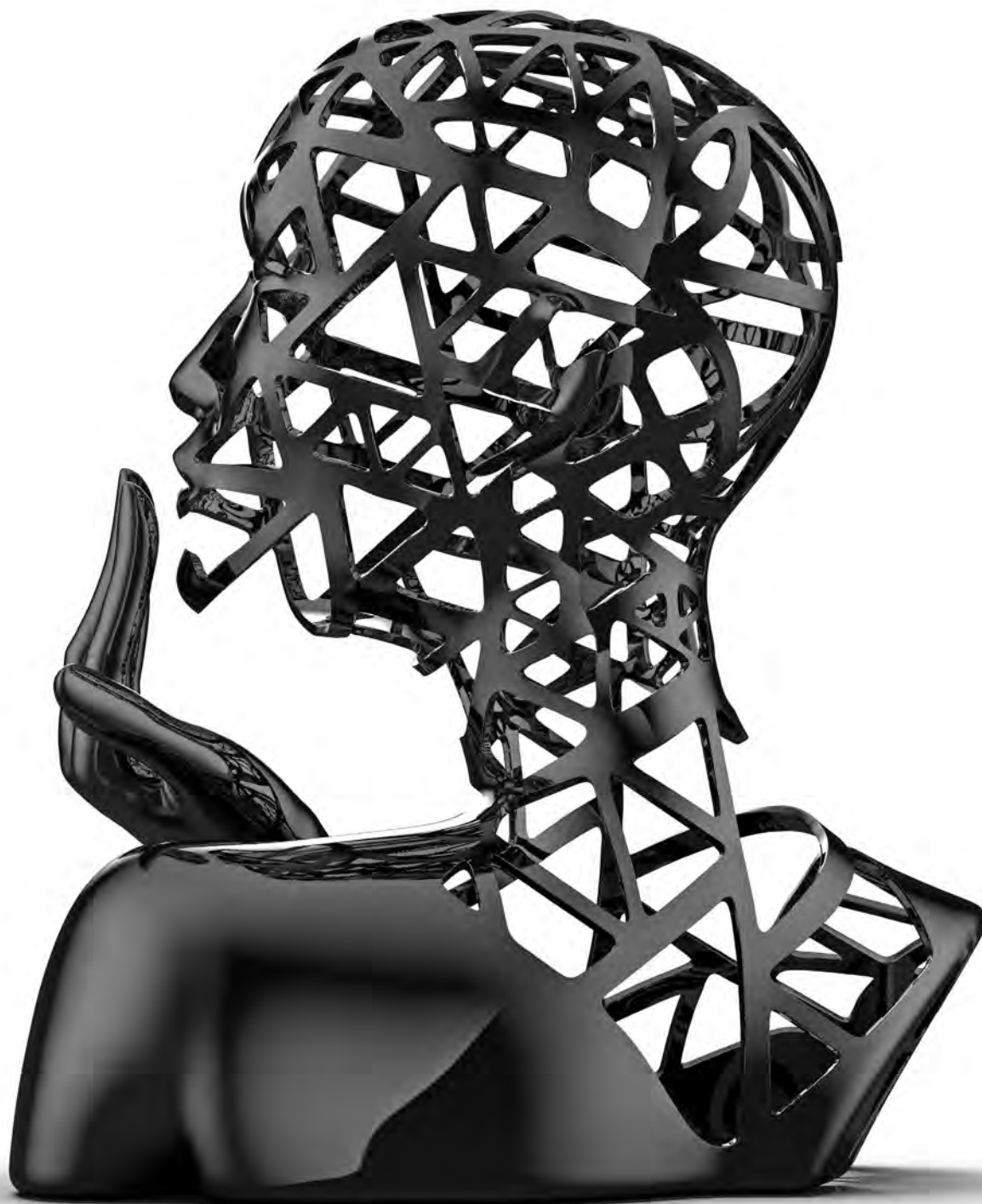


www.universaldisplayusa.com
www.universaldisplay.co.uk



FRAME





FRAME

FRH		
H	38cm	15"
W	32cm	11.5"
D	20cm	8"

Universal Display Fittings Co. Ltd
Unit 4 95 Victoria Road
London
NW10 6DJ
United Kingdom
Tel. 020 8206 5010
info@universaldisplay.co.uk

Universal Display & Design Inc.
368 9th Avenue
New York
10001
USA
Tel. 212 242 0374
info@universaldisplayusa.com



www.universaldisplayusa.com
www.universaldisplay.co.uk



HEAD & HANDS





FL/FWH/34B
FEMALE SOLID WOOD HEAD
34 CM BLACK ASH



FL/MWH/34/B
MALE SOLID WOOD HEAD
34 CM BLACK ASH



BUR/UDHF5/38/B



BUR/UDHF5/43/B



BUR/UDH/F5/33/B



FEMALE ARTICULATED
HANDS 34 & 36 CM
AHFR/35
AHFR/36
AHFL/34
AHFL/36

MALE ARTICULATED
HANDS 34 & 36 CM
AHMR/34
AHMR/36
AHML/34
AHML/36

HEADS & HANDS

Universal Display Fittings Co. Ltd
Unit 4 95 Victoria Road
London
NW10 6DJ
United Kingdom
Tel. 020 8206 5010
info@universaldisplay.co.uk

Universal Display & Design Inc.
368 9th Avenue
New York
10001
USA
Tel. 212 242 0374
info@universaldisplayusa.com



www.universaldisplayusa.com
www.universaldisplay.co.uk



ULTRA

ACCESSORY HANDS





SL2L70

SL2L40



SL1L70

SL1L40

ULTRA

ACCESSORY HANDS

Universal Display Fittings Co. Ltd
Unit 4 95 Victoria Road
London
NW10 6DJ
United Kingdom
Tel. 020 8206 5010
info@universaldisplay.co.uk

Universal Display & Design Inc.
368 9th Avenue
New York
10001
USA
Tel. 212 242 0374
info@universaldisplayusa.com



www.universaldisplayusa.com
www.universaldisplay.co.uk



SPACE

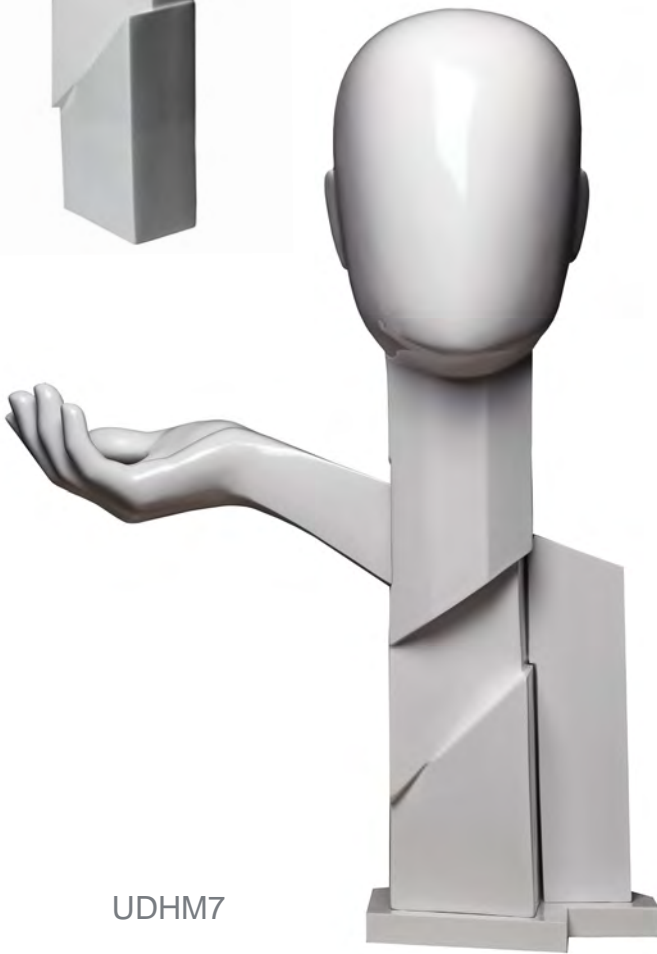




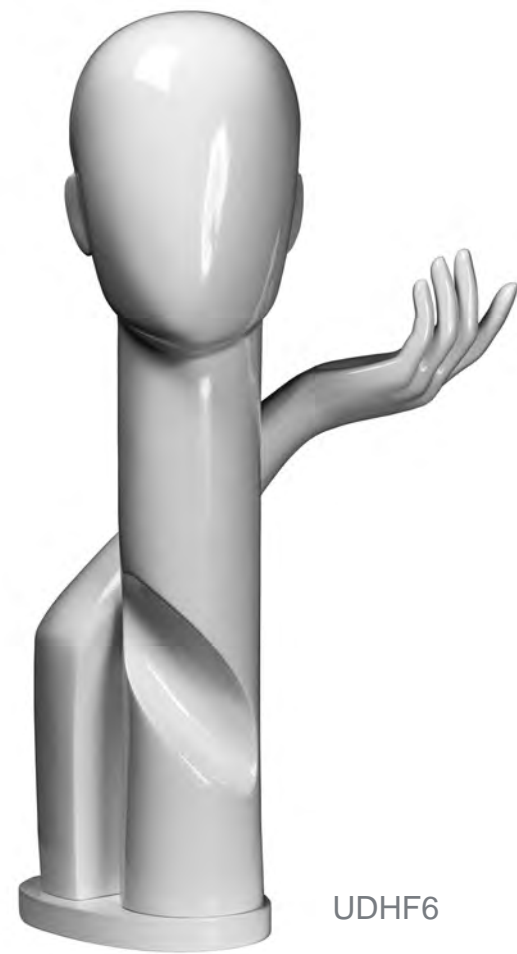
UDHM4



UDHF5



UDHM7



UDHF6

SPACE

Accessory Heads Height: 57 cm / 22.5"

Universal Display Fittings Co. Ltd
Unit 4 95 Victoria Road
London
NW10 6DJ
United Kingdom
Tel. 020 8206 5010
info@universaldisplay.co.uk

Universal Display & Design Inc.
368 9th Avenue
New York
10001
USA
Tel. 212 242 0374
info@universaldisplayusa.com



www.universaldisplayusa.com
www.universaldisplay.co.uk



PROJECT 9





PROJECT 8





PROJECT 8

Universal Display Fittings Co. Ltd
Unit 4 95 Victoria Road
London
NW10 6DJ
United Kingdom
Tel. 020 8206 5010
info@universaldisplay.co.uk

Universal Display & Design Inc.
368 9th Avenue
New York
10001
USA
Tel. 212 242 0374
info@universaldisplayusa.com



www.universaldisplayusa.com
www.universaldisplay.co.uk



ACCH43R



ACCH33R



ACCESSORY HEADS





ACCH33CAL



ACCH33CAL

ACCH33 Height 33cm | 13"
ACCH43 Height 43cm | 17"

ACCESSORY HEADS

Universal Display Fittings Co. Ltd
Unit 4 95 Victoria Road
London
NW10 6DJ
United Kingdom
Tel. 020 8206 5010
info@universaldisplay.co.uk

Universal Display & Design Inc.
368 9th Avenue
New York
10001
USA
Tel. 212 242 0374
info@universaldisplayusa.com



www.universaldisplayusa.com
www.universaldisplay.co.uk



PUDH3



PUDH2



PUDH1



DPUDH 1



DPUDH 2



DPUDH 3

ACCESSORY HEADS





SLHH



SLH



UDH1
40 CM



UDH2
50 CM



UDH3
60 CM

ACCESSORY HEADS

Universal Display Fittings Co. Ltd
Unit 4 95 Victoria Road
London
NW10 6DJ
United Kingdom
Tel. 020 8206 5010
info@universaldisplay.co.uk

Universal Display & Design Inc.
368 9th Avenue
New York
10001
USA
Tel. 212 242 0374
info@universaldisplayusa.com



www.universaldisplayusa.com
www.universaldisplay.co.uk



DOROTHY

FLOOR STANDING OR TABLE TOP BASE

Universal Display Fittings Co. Ltd
Unit 4 95 Victoria Road
London
NW10 6DJ
United Kingdom
Tel. 020 8206 5010
info@universaldisplay.co.uk

Universal Display & Design Inc.
368 9th Avenue
New York
10001
USA
Tel. 212 242 0374
info@universaldisplayusa.com



www.universaldisplayusa.com
www.universaldisplay.co.uk



19"
49 CM

8"
20 CM

13"
33 CM



ISABELLA

Universal Display Fittings Co. Ltd
Unit 4 95 Victoria Road
London
NW10 6DJ
United Kingdom
Tel. 020 8206 5010
info@universaldisplay.co.uk

Universal Display & Design Inc.
368 9th Avenue
New York
10001
USA
Tel. 212 242 0374
info@universaldisplayusa.com



www.universaldisplayusa.com
www.universaldisplay.co.uk

72 CM



38 CM

15 CM



ORCHID

BASE W 27CM X D 15CM X H 55CM

Universal Display Fittings Co. Ltd
Unit 4 95 Victoria Road
London
NW10 6DJ
United Kingdom
Tel. 020 8206 5010
info@universaldisplay.co.uk

Universal Display & Design Inc.
368 9th Avenue
New York
10001
USA
Tel. 212 242 0374
info@universaldisplayusa.com



www.universaldisplayusa.com
www.universaldisplay.co.uk



V2



V1

SOLAR HEADS





AXM1



AXM2



AXF1



AXF2

AXIS





SL1L



SL3



SL1R



SL2R



SL2L

SOLAR HANDS





SL1L-38



SL1R-38



SL1L-50



SL1R-50

SOLAR HANDS

Universal Display Fittings Co. Ltd
Unit 4 95 Victoria Road
London
NW10 6DJ
United Kingdom
Tel. 020 8206 5010
info@universaldisplay.co.uk

Universal Display & Design Inc.
368 9th Avenue
New York
10001
USA
Tel. 212 242 0374
info@universaldisplayusa.com



www.universaldisplayusa.com
www.universaldisplay.co.uk



DLH1R & DLH1L



DLHR



DLH1L

DIALOGUE HANDS





DLH1R & DLH1L



DLH1L



DLH1R

Foundry Finish Shown

DIALOGUE HANDS

Universal Display Fittings Co. Ltd
Unit 4 95 Victoria Road
London
NW10 6DJ
United Kingdom
Tel. 020 8206 5010
info@universaldisplay.co.uk

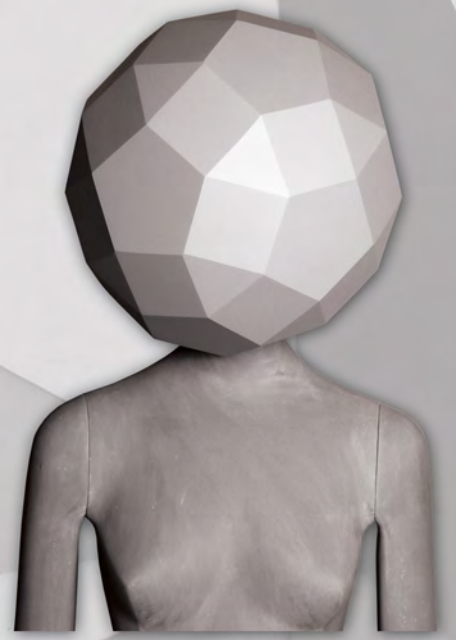
Universal Display & Design Inc.
368 9th Avenue
New York
10001
USA
Tel. 212 242 0374
info@universaldisplayusa.com



www.universaldisplayusa.com
www.universaldisplay.co.uk



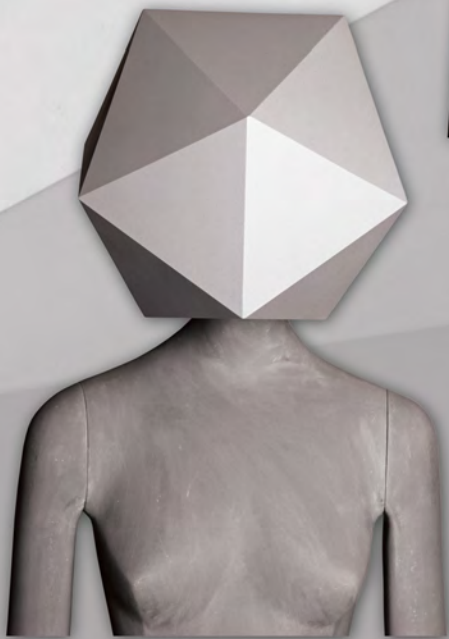
GEOH1



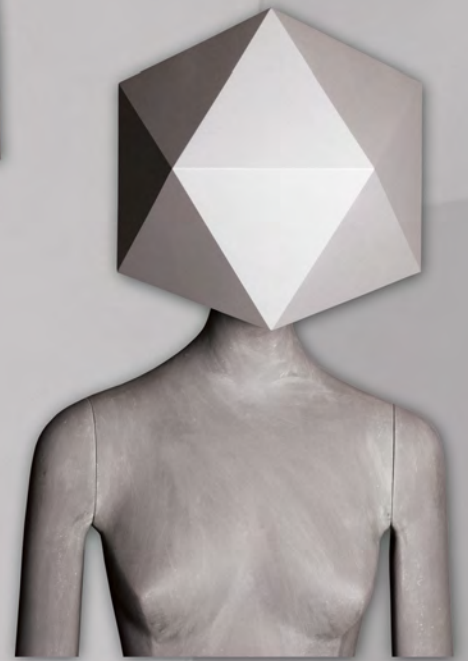
GEOH1



GEOH5



GEOH4



GEOH4

GEO_H





GEOH2



GEOH2



GEOH3



GEOH3

GEO_H

GEOH 5 & 4 ARE DESIGNED FOR THE PURE RANGE OF MANNEQUINS

Universal Display Fittings Co. Ltd
Unit 4 95 Victoria Road
London
NW10 6DJ
United Kingdom
Tel. 020 8206 5010
info@universaldisplay.co.uk

Universal Display & Design Inc.
368 9th Avenue
New York
10001
USA
Tel. 212 242 0374
info@universaldisplayusa.com



www.universaldisplayusa.com
www.universaldisplay.co.uk



NS2



HS1



NS1



H1



N1

ACCESSORIES





N1

N1-6



N1-14



N1-10

ACCESSORIES

Universal Display Fittings Co. Ltd
Unit 4 95 Victoria Road
London
NW10 6DJ
United Kingdom
Tel. 020 8206 5010
info@universaldisplay.co.uk

Universal Display & Design Inc.
368 9th Avenue
New York
10001
USA
Tel. 212 242 0374
info@universaldisplayusa.com



www.universaldisplayusa.com
www.universaldisplay.co.uk



MB-L-BASE

MB-M-BASE

MB-S-BASE



CFAC2

ACCESSORIES²





ACCESSORIES FAUX WOOD





SLHH-W



N1-W



UDH1-W



UDH2-W



UDH3-W



SL4L-W



SL1L-W



SL1R-W



SL2L-W



SL3-W



SL2L-W SL2R-W



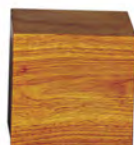
SR6-W



SR3-W



SR5-W



SR4-W



SR1-W



SR2-W



CMBB-BASE



CFAC-B



CFACM-B



HBJN



ACCESSORIES³





METAL ACCESSORIES 4





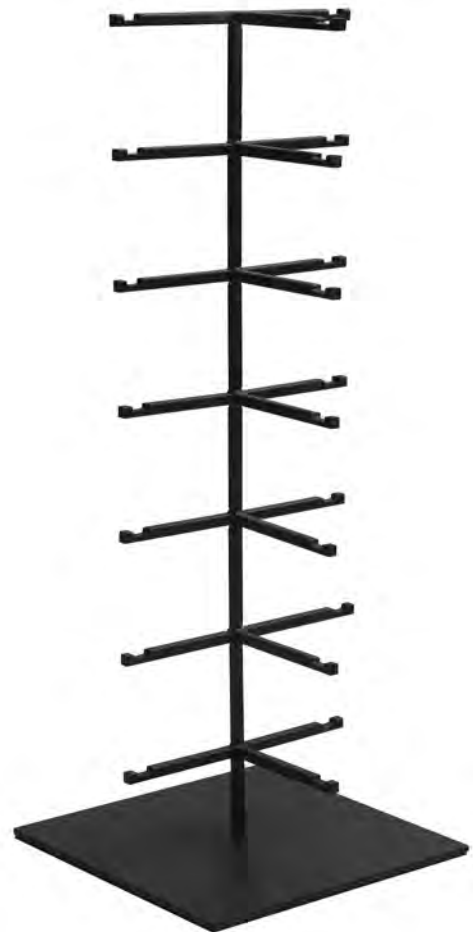
BON/SSR



BON/TS



BON/SR



7TSUN/B



AS/BAG/L



AS/RISER
12CM TALL
20CM DEEP
37CM WIDE



AS/TFBS



LFT/BASE



LBFB

METAL ACCESSORIES 4

Universal Display Fittings Co. Ltd
Unit 4 95 Victoria Road
London
NW10 6DJ
United Kingdom
Tel. 020 8206 5010
info@universaldisplay.co.uk

Universal Display & Design Inc.
368 9th Avenue
New York
10001
USA
Tel. 212 242 0374
info@universaldisplayusa.com



www.universaldisplayusa.com
www.universaldisplay.co.uk



UNO







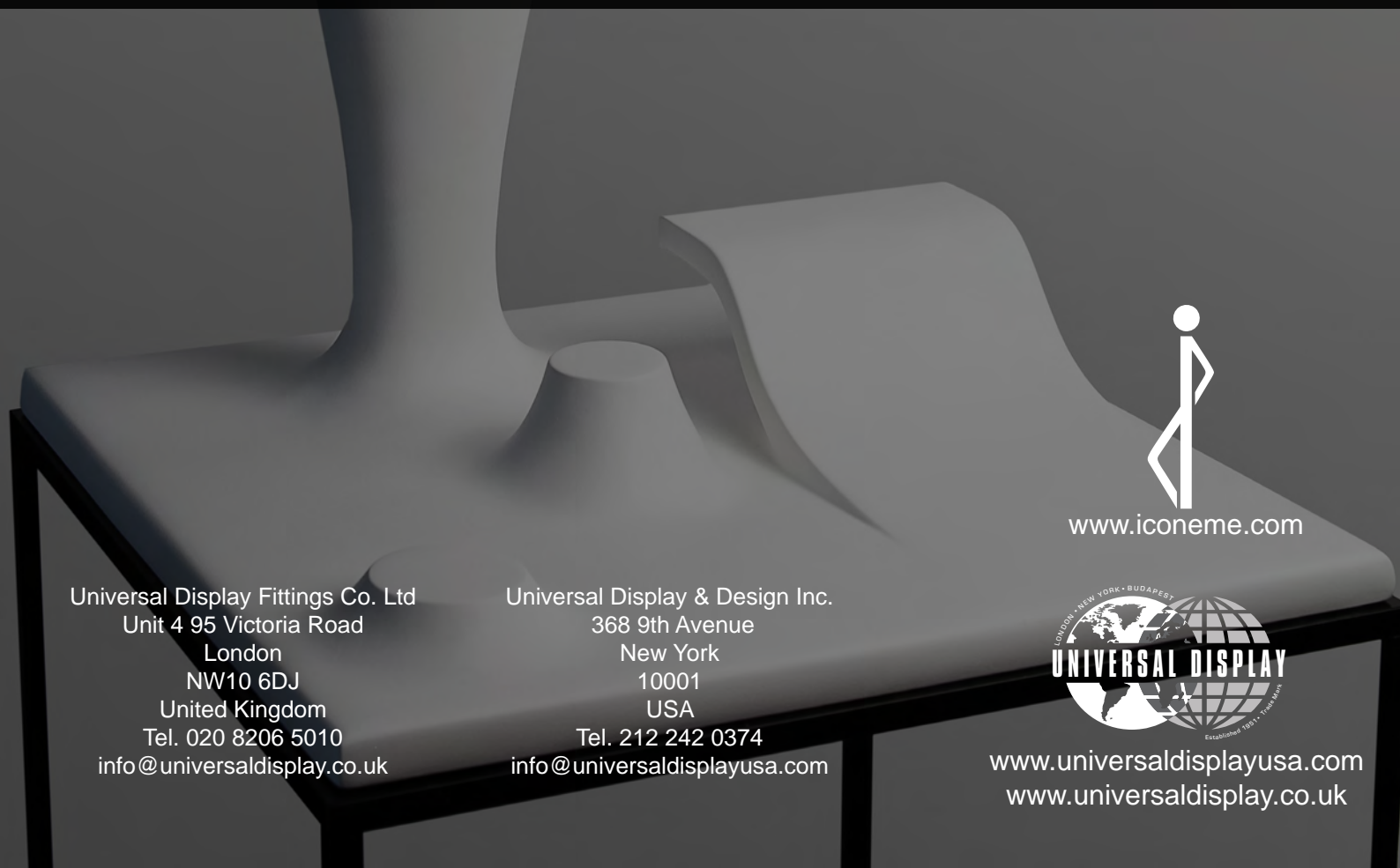
The UNO accessory unit can be used in conjunction with Iconeme's technology to deliver a product that communicates to shoppers in a new and ground-breaking way. The Uno range of Male and Female forms can have Iconeme's Patent Pending Beacon technology embedded in them to work with the Iconeme app, delivering shoppable windows and in-store displays. UNO sits on top of the Cubic range of Plinths, there are two heights in the range; 100 cm & 45 cm. UNO and Cubic are available in a range of colours to suit.



UNO-M



UNO-F



www.iconeme.com

Universal Display Fittings Co. Ltd
Unit 4 95 Victoria Road
London
NW10 6DJ
United Kingdom
Tel. 020 8206 5010
info@universaldisplay.co.uk

Universal Display & Design Inc.
368 9th Avenue
New York
10001
USA
Tel. 212 242 0374
info@universaldisplayusa.com

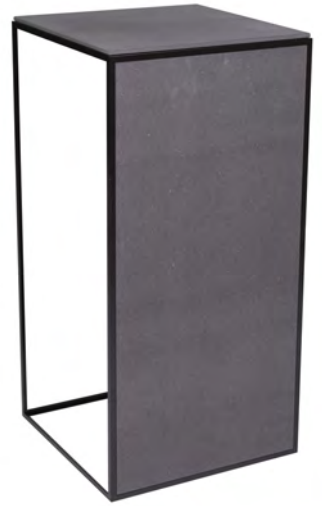


www.universaldisplayusa.com
www.universaldisplay.co.uk



CUBIC

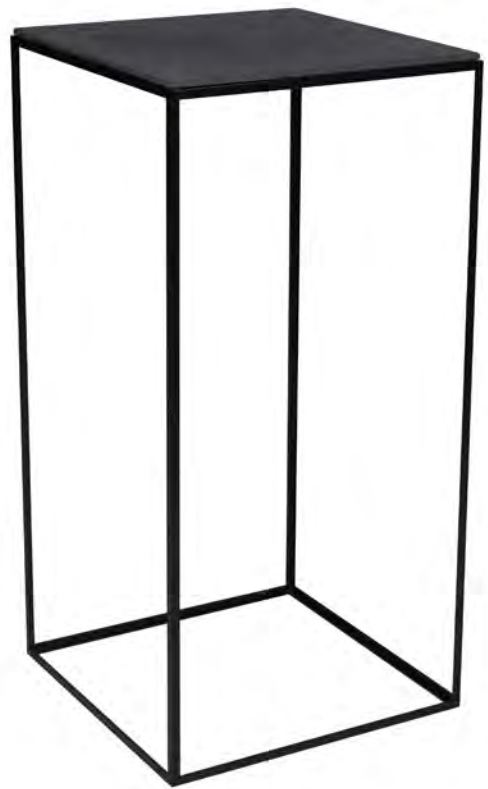








CUBIC 1
45cm x45cm x45cm
Ref 976157



CUBIC 2
95cm x 45cm x 45cm
Ref 976158



Shelf and side panel :
45 cm x 45 cm Ref 976159
95 cm x 95 cm Ref 976160
Panels drop into place and have magnetic fittings.

Plinths can be clamped together.

Universal Display Fittings Co. Ltd
Unit 4 95 Victoria Road
London
NW10 6DJ
United Kingdom
Tel. 020 8206 5010
info@universaldisplay.co.uk

Universal Display & Design Inc.
368 9th Avenue
New York
10001
USA
Tel. 212 242 0374
info@universaldisplayusa.com



www.universaldisplayusa.com
www.universaldisplay.co.uk



METAL ACCESSORIES 3





HSS



HSL



HCBS



BBS



HBL



HBS



HJS



ACCY4L

METAL ACCESSORIES 3

Universal Display Fittings Co. Ltd
Unit 4 95 Victoria Road
London
NW10 6DJ
United Kingdom
Tel. 020 8206 5010
info@universaldisplay.co.uk

Universal Display & Design Inc.
368 9th Avenue
New York
10001
USA
Tel. 212 242 0374
info@universaldisplayusa.com



www.universaldisplayusa.com
www.universaldisplay.co.uk



CBS



DBS

Metal Accessories 2





CSS



HCBS



SS1

Metal Accessories 2

Universal Display Fittings Co. Ltd
Unit 4 95 Victoria Road
London
NW10 6DJ
United Kingdom
Tel. 020 8206 5010
info@universaldisplay.co.uk

Universal Display & Design Inc.
368 9th Avenue
New York
10001
USA
Tel. 212 242 0374
info@universaldisplayusa.com



www.universaldisplayusa.com
www.universaldisplay.co.uk



OBN

Height
42>66cm



OBB



PBN

Height
40>64cm



PBB



STB

Height
44>66cm



STN

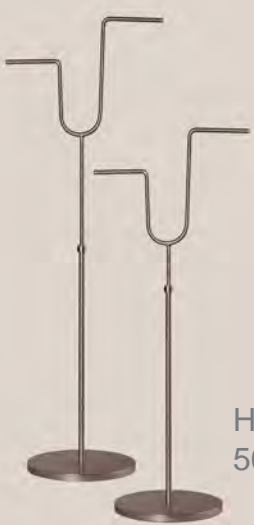


TBN

Height
35>60cm

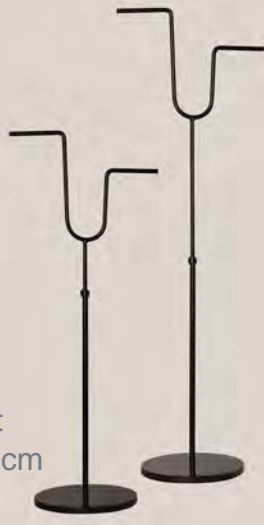


TBB



UTBN

Height
50>72cm



UTBB

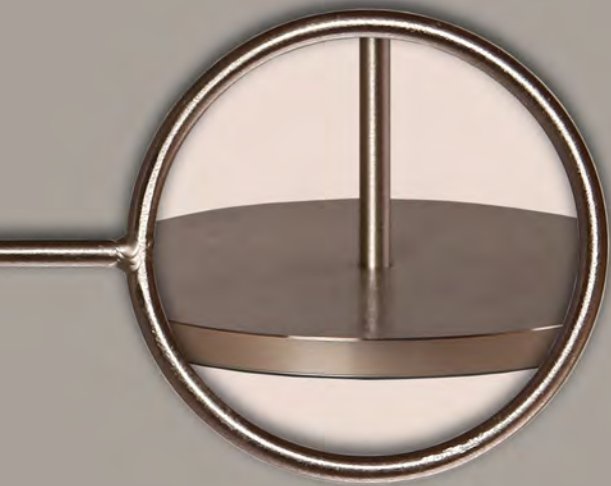


YBN

Height
40>63cm



YBB



Brush Nickel Finish



Black Finish



SS2
Height 40cm
Base 15x15cm

SS1
Height 40cm
Base 15x15cm

METAL ACCESSORIES

Universal Display Fittings Co. Ltd
Unit 4 95 Victoria Road
London
NW10 6DJ
United Kingdom
Tel. 020 8206 5010
info@universaldisplay.co.uk

Universal Display & Design Inc.
368 9th Avenue
New York
10001
USA
Tel. 212 242 0374
info@universaldisplayusa.com



www.universaldisplayusa.com
www.universaldisplay.co.uk



WOODEN ACCESSORIES





OBN-WA



UTBN-WA



TBN-WA



PBN-WA



STB-WA



YBN-WA



WA



WR



WB



WHT3
Height 50 cm



WHT2
Height 40 cm



WHT1
Height 30 cm



Black Finish

Brush Nickel Finish



WOODEN ACCESSORIES

Universal Display Fittings Co. Ltd
Unit 4 95 Victoria Road
London
NW10 6DJ
United Kingdom
Tel. 020 8206 5010
info@universaldisplay.co.uk

Universal Display & Design Inc.
368 9th Avenue
New York
10001
USA
Tel. 212 242 0374
info@universaldisplayusa.com



www.universaldisplayusa.com
www.universaldisplay.co.uk

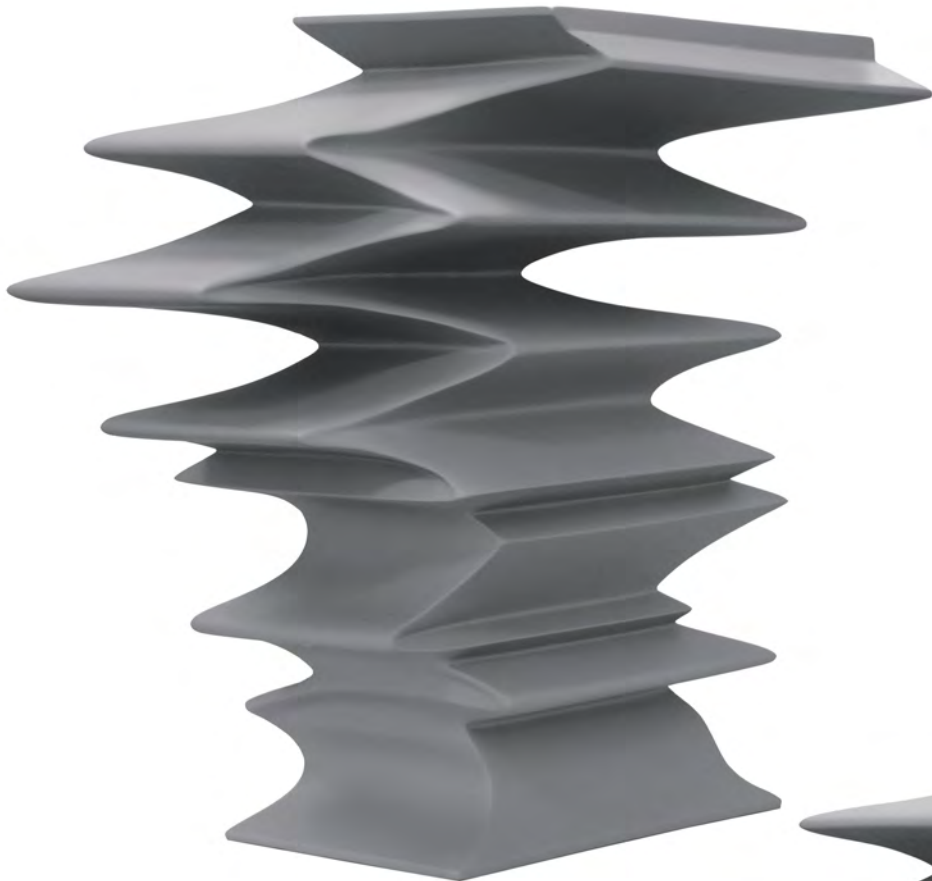
ZR3

ZR2

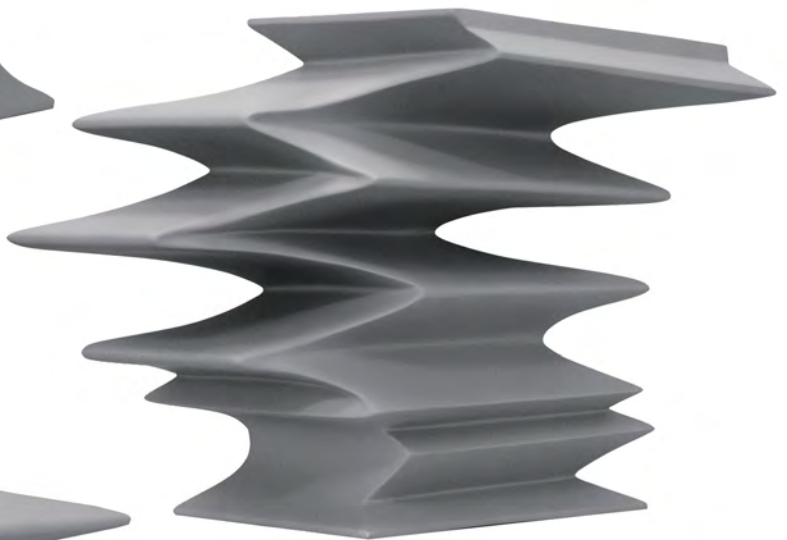
ZR1

ZRISERS

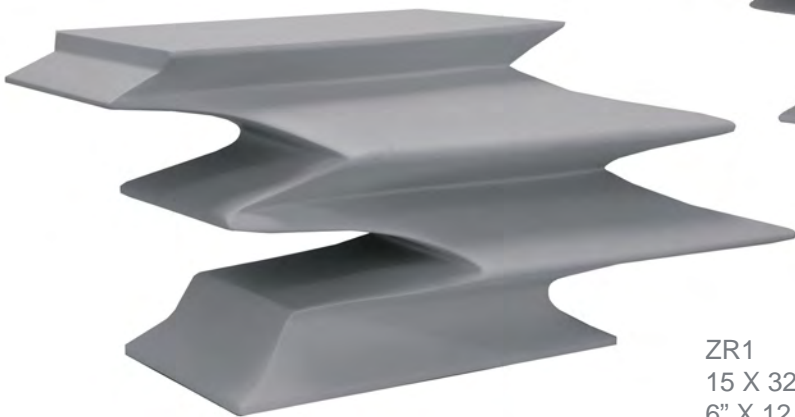




ZR3
32 X 34 20CM
12.5" X 13.5 X 8"



ZR2
23 X 33 X 20CM
9" X 13" X 8"



ZR1
15 X 32 18CM
6" X 12.5" X 7"

ZRISERS

Universal Display Fittings Co. Ltd
Unit 4 95 Victoria Road
London
NW10 6DJ
United Kingdom
Tel. 020 8206 5010
info@universaldisplay.co.uk

Universal Display & Design Inc.
368 9th Avenue
New York
10001
USA
Tel. 212 242 0374
info@universaldisplayusa.com



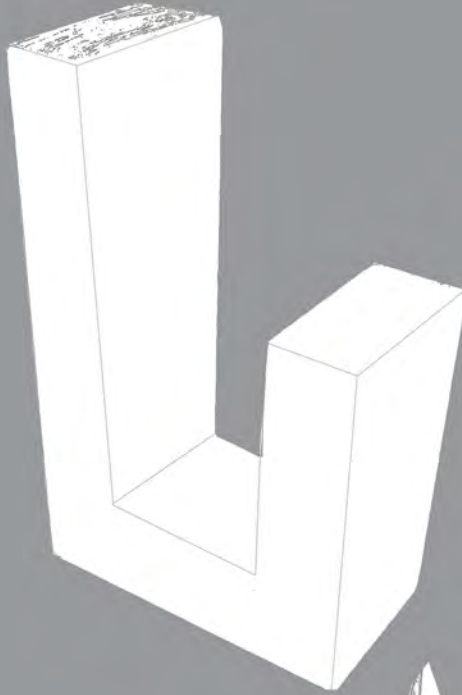
www.universaldisplayusa.com
www.universaldisplay.co.uk



RISERS³



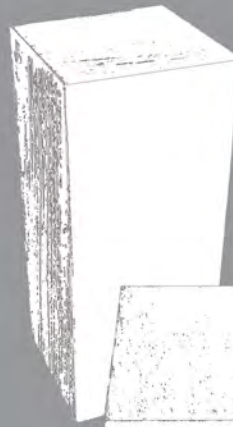
SR1
H 9" - 22.8 cm
W 6" - 15.2 cm



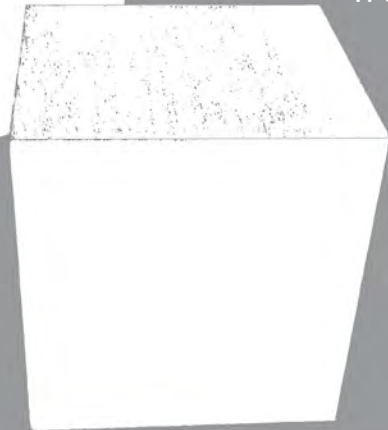
SR2
H 10" - 25.5 cm
W 6" - 15.2 cm



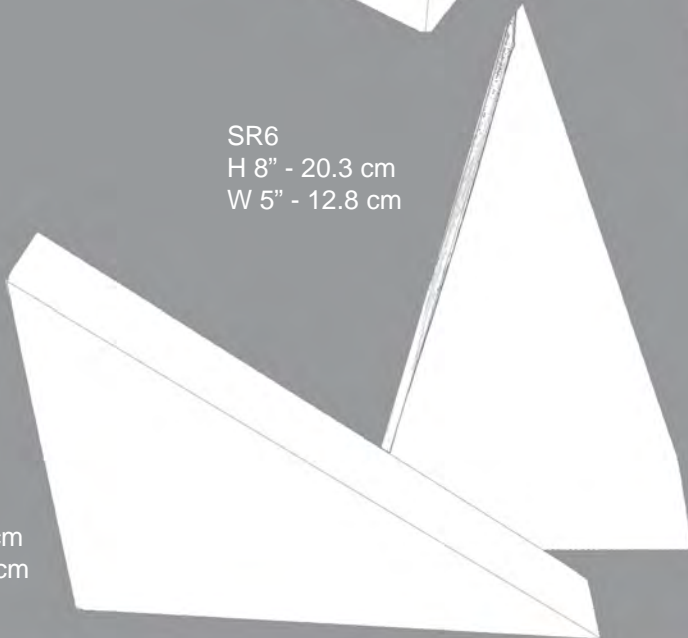
SR5
H 7" - 17.8 cm
W 3" - 7.2 cm



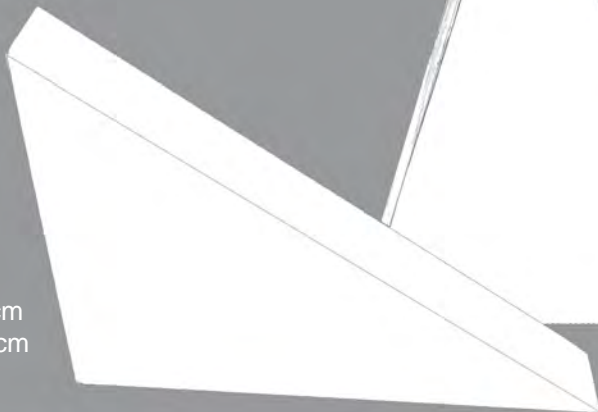
SR4
H 5" - 12.8 cm
W 5" - 12.8 cm



SR6
H 8" - 20.3 cm
W 5" - 12.8 cm



SR3
H 6" - 15.2 cm
W 9" - 22.8 cm



Alternate Wood Finishes

RISERS³

Universal Display Fittings Co. Ltd
Unit 4 95 Victoria Road
London
NW10 6DJ
United Kingdom
Tel. 020 8206 5010
info@universaldisplay.co.uk

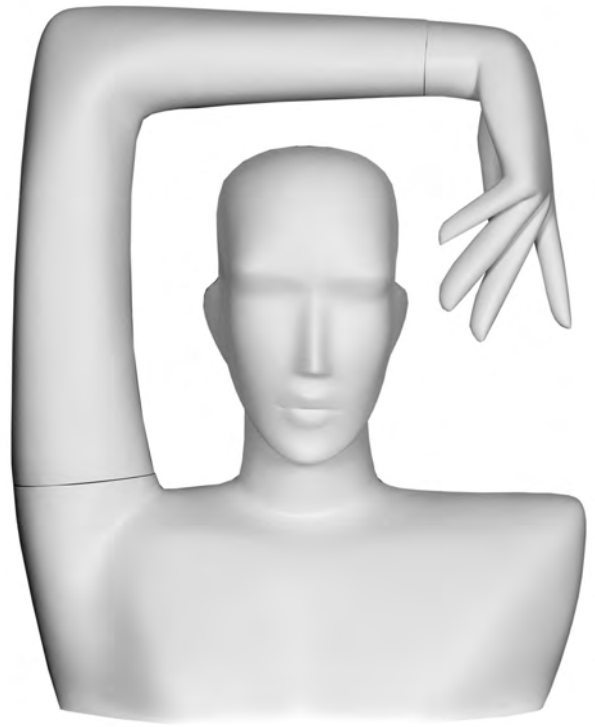
Universal Display & Design Inc.
368 9th Avenue
New York
10001
USA
Tel. 212 242 0374
info@universaldisplayusa.com



www.universaldisplayusa.com
www.universaldisplay.co.uk



INCA 3/4



INCA ACCY



INCA

INCA





GQ



DJ



DP5

JEAN LEGS

Any mannequin in the Universal Display range can be used to create a pair of jean legs

Universal Display Fittings Co. Ltd
Unit 4 95 Victoria Road
London
NW10 6DJ
United Kingdom
Tel. 020 8206 5010
info@universaldisplay.co.uk

Universal Display & Design Inc.
368 9th Avenue
New York
10001
USA
Tel. 212 242 0374
info@universaldisplayusa.com



www.universaldisplayusa.com
www.universaldisplay.co.uk



PIL90

MATERNITY FORM





UDV2

200 X 25 X 25CM
19" X 10" X 10"

UDV3



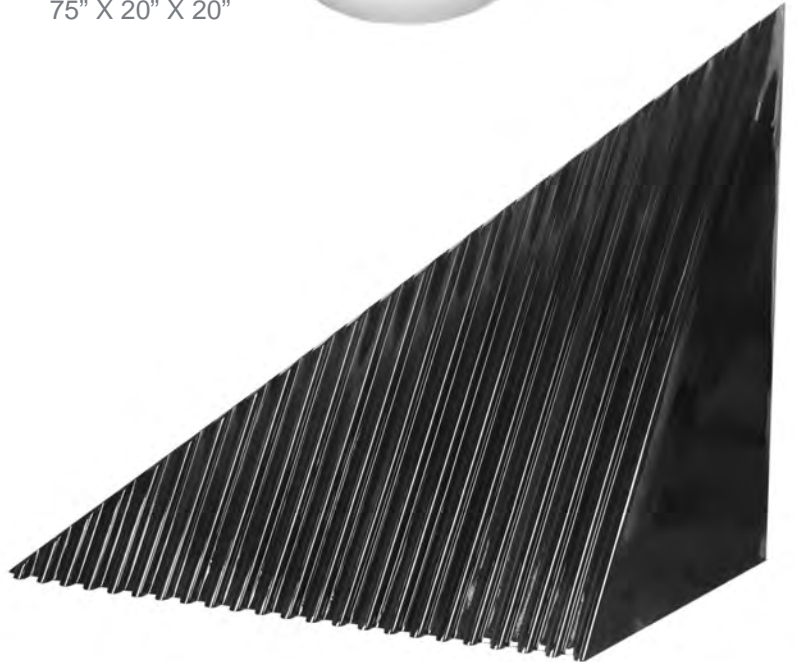
UDV1
186 X 50 X 50CM
75" X 20" X 20"



UDST
100 X 30 X 30CM
40: X 12" X 12"



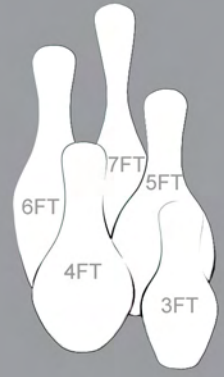
UDSS
75 X 40 X 40CM
29.5: X 16" X 16"



UDT
90 X 120 X 95CM
36: X 48" X 38"

DECORATIVES





BOWLING PINS





ALFIE



ROCCO

PUG





Sandy



Patch



Butch

BULLDOG





Boris

Bullseye

BULL TERRIER





Lulu



Champers



Amber

TIBETAN TERRIER





Greyhound A



Greyhound B



Greyhound C



Greyhound D

GREYHOUND





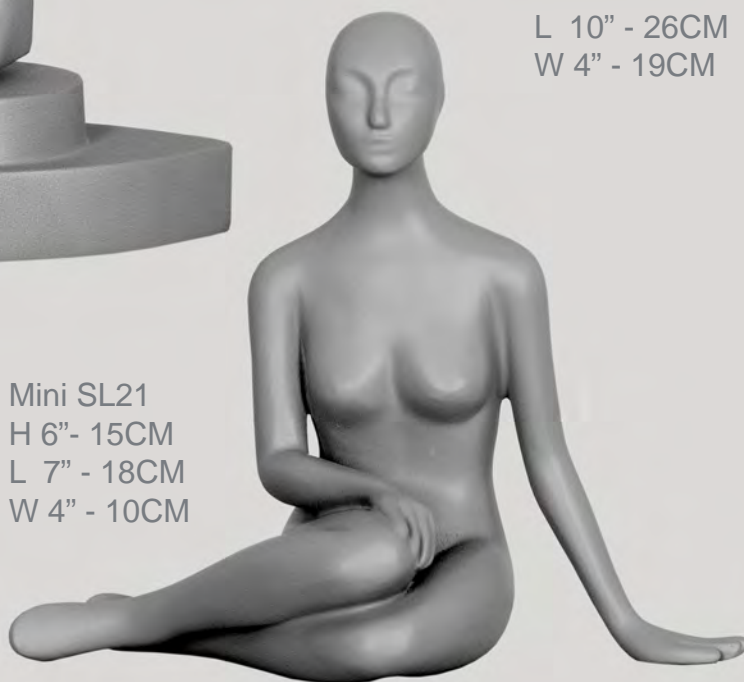
Mini SL18
H 21" - 54CM
L 5" - 13CM
W 5" - 13CM



Mini FL7
H 20" - 51CM
L 9" - 23CM
W 5" - 12CM



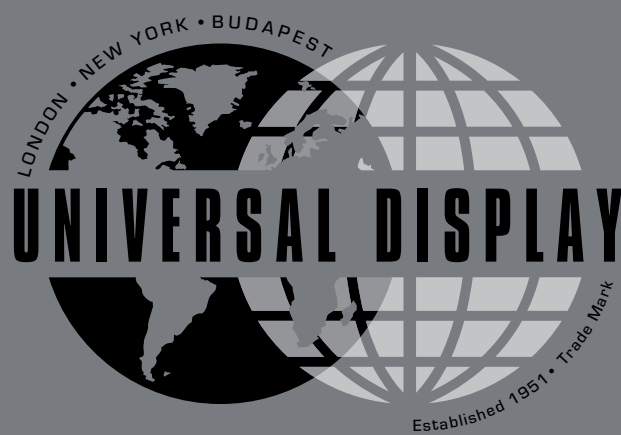
Mini FL!
H 19" - 49CM
L 10" - 26CM
W 4" - 19CM



Mini SL21
H 6" - 15CM
L 7" - 18CM
W 4" - 10CM

MINIATURE





Universal Display Fittings Co. Ltd
Unit 4 95 Victoria Road
London
NW10 6DJ
United Kingdom
Tel. 020 8206 5010
info@universaldisplay.co.uk
www.universaldisplay.co.uk

Universal Display & Design Inc.
368 9th Avenue
New York
10001
USA
Tel. 212 242 0374
info@universaldisplayusa.com
www.universaldisplayusa.com