

Universal Display



SUSTAINABILITY

‘GREEN SUSTAINABLE FASHION MANNEQUINS’

INTRODUCTION

INNOVATION

MATERIAL OPTIONS

LIFE CYCLE ASSESSMENT

MANUFACTURE:

PRODUCING THE MATERIALS

WASTE

WORKING CONDITIONS

PAINT

CERTIFICATION

DISTRIBUTION:

PRIMARY AND SECONDARY PACKAGING MATERIALS

TRANSPORTING THE FINISH PRODUCT TO ITS DESTINATION

RENOVATION

END OF LIFE

RECYCLING

CONCLUSION

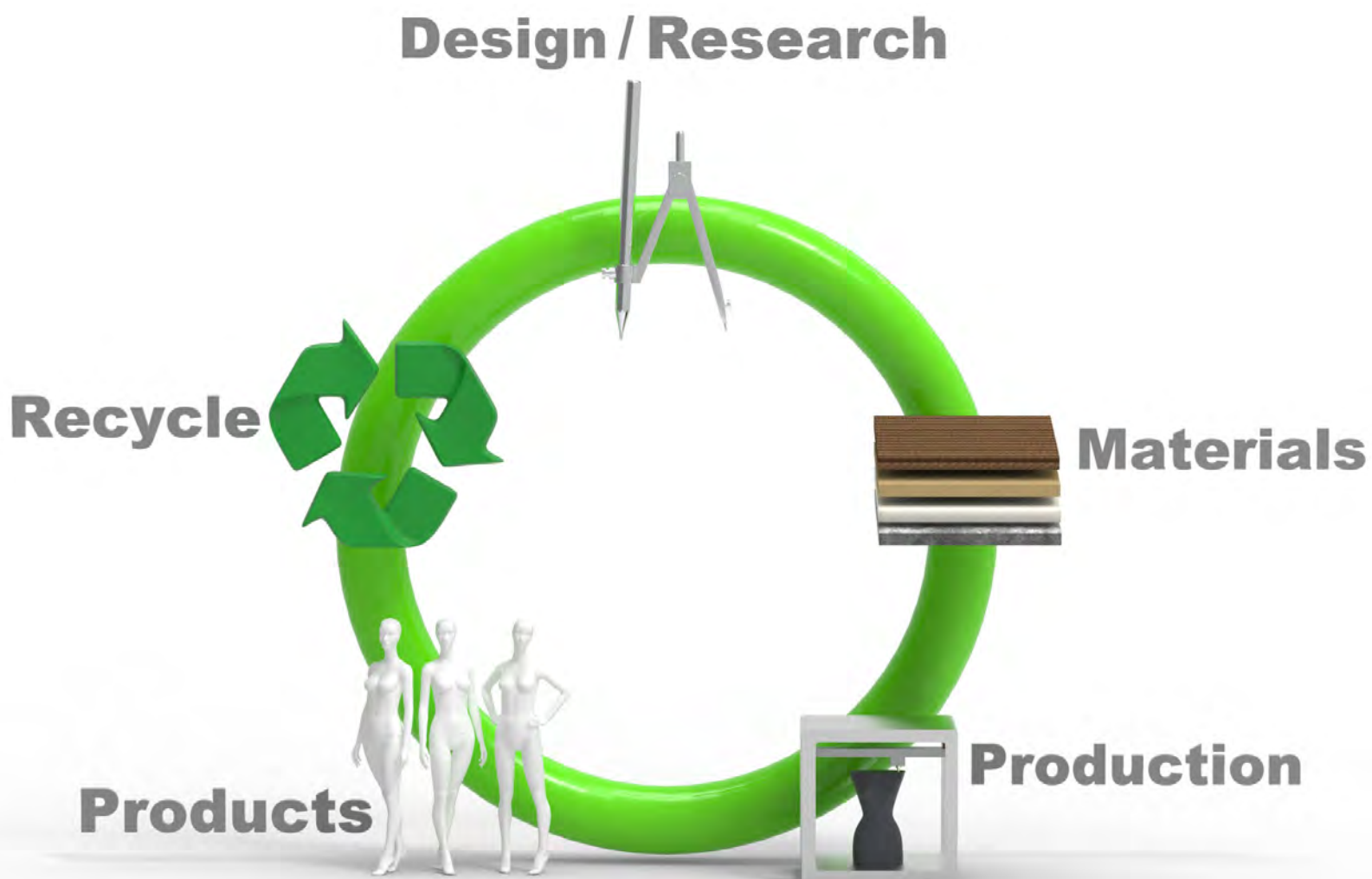
All of us at Universal Display, probably like you, have family & friends around the world who, like us, are feeling the impact of increasingly concerning negative environmental changes. We are conscious that we wish to leave this planet in the same, if not a better, condition than in which we inherited it.

We love working with you and creating amazing products. Now more than ever we have to be mindful of our path to creation and be sure that what we are offering you is truly sustainable. This is why over the last few years we have accelerated our sustainability drive. We are constantly searching and experimenting with new materials and processes.

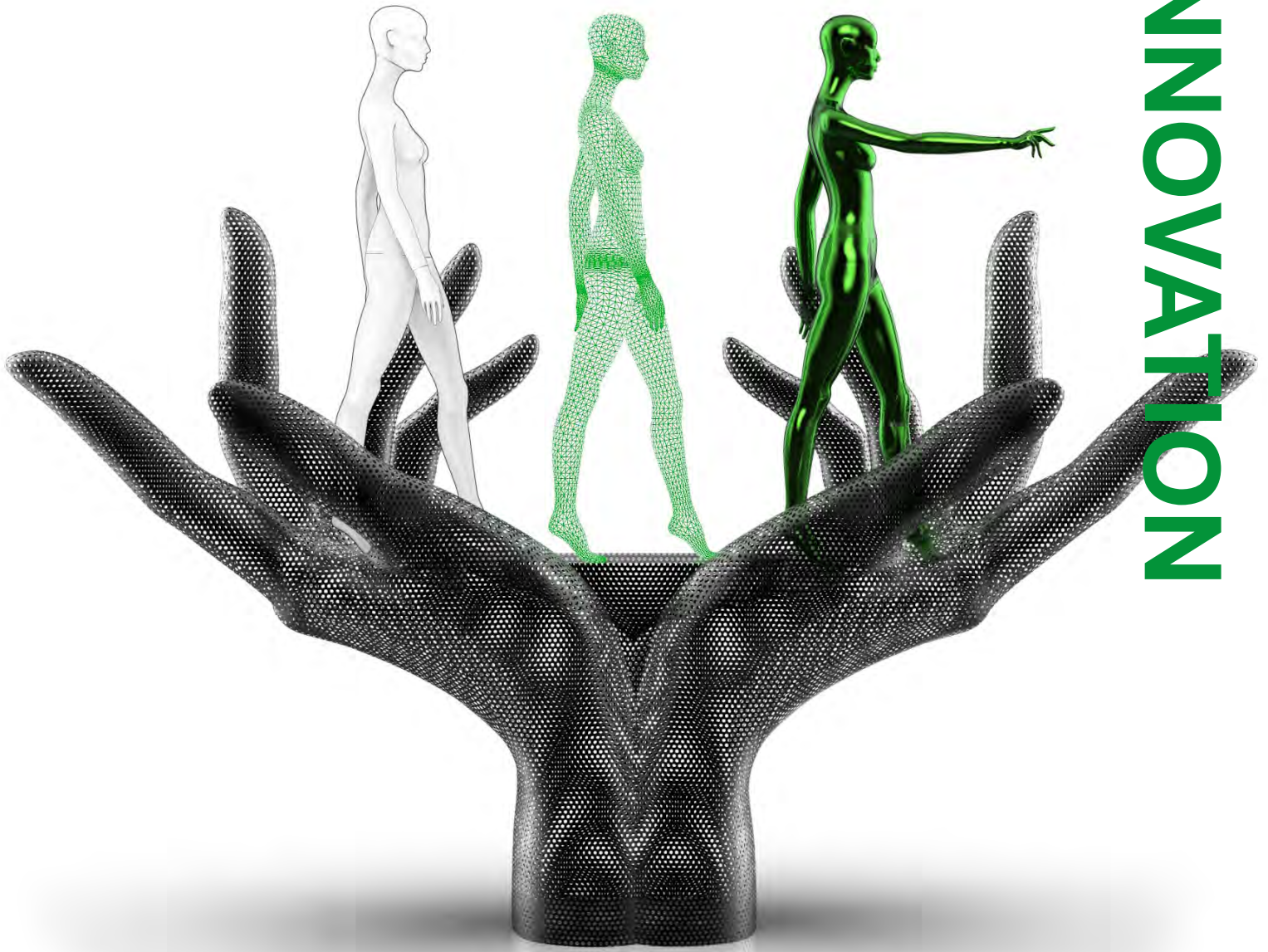
We are not where we want to be yet, but we are on a positive journey to sustainability.

SO HOW ARE WE GOING TO DO THIS?

Design & research runs through everything we do, our products, materials and production. We have a circular process where all the stages inform and link to each other. We are now even more aware that the end life of products and how our clients manage these is of great importance and we can help you.



INNOVATION



SUSTAINABILITY DELIVERED THROUGH INNOVATION

Over the last few years we have changed the way we work, our work-flow has moved from the traditional analogue methods of creation, to a more powerful and faster digital form. We digitally sculpt products for clients, the output of which can be reviewed in various digital formats and edited at will.

SO HOW DOES THIS HELP SUSTAINABILITY?

With the switch to digital content, files can be reviewed by clients in various digital formats from PDF, AR and VR. This cuts down the time the client has to travel to see the product in the initial stages, if at all. Once the final product has been approved, the design files can be digitally expedited within the hour to our manufacturing facility. Traditionally a master would have been made using various materials like clay and resin and then shipped to our manufacturing base by sea or air for moulding. The digital format cuts down on shipping and packaging, the digital files are 3D printed locally and a master is produced for production.

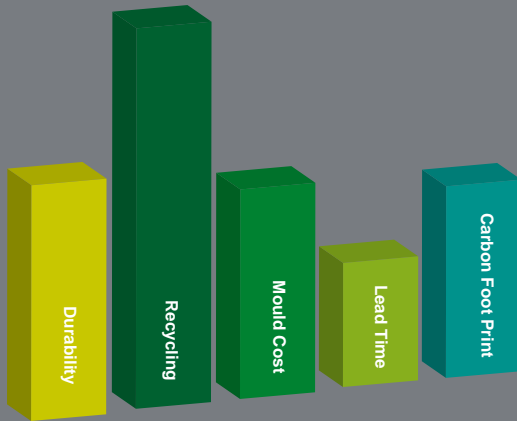
In summary, these new methods are quick, they greatly reduce the need for raw materials, shipping and packaging materials.

SO WHAT ARE THE OPTIONS?

We offer a diverse range of materials, following are the main ones we offer:

BIO RESIN

One of the big advantages of using Bio resin is that legacy moulds can be used to produce existing mannequin ranges at low cost, there is no minimum order quantity. The below shows various sustainable natural fibres that can be added into the bio-resin to reinforce it.



Bio-Based PDO (1,3 Propanediol) is a pure, petroleum-free derived diol, 100% sustainably and renewable sourced. It is used in a range of industrial applications including polymers, functional fluids. polyurethanes are used globally in coatings, inks, and resin applications. Good recycling option re-purposed as a construction infill. Open-Loop Cycle

SUSTAINABLE ADDITIVE FIBRES FOR BIO RESIN



Ramie

Flax

Raffia

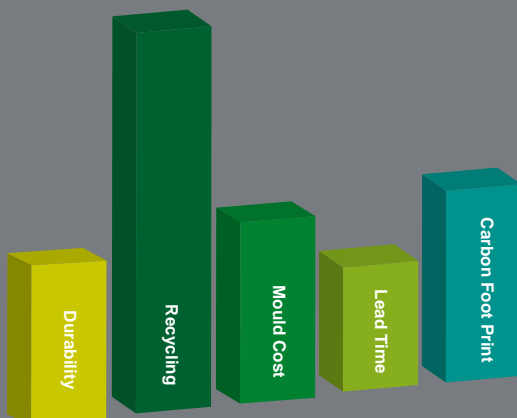
Raffia +
Translucent Resin

Cork

Bamboo

RAFFIA AND RICE PASTE

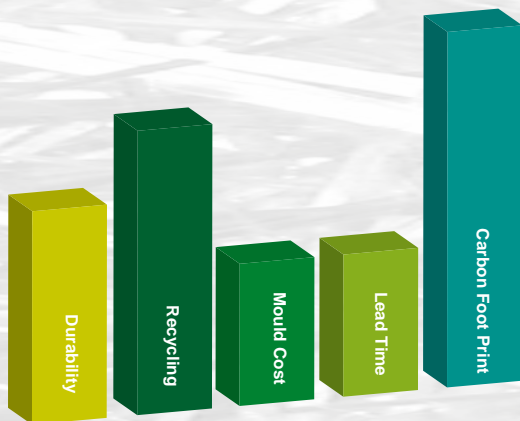
Rice and raffia have been used for thousands of years for construction. The raffia can be covered in cork, fabric or paper which can then be sprayed with water based paints if required. Raffia and rice paste have good recycling options. Open-Loop Cycle



GRP GLASS REINFORCED PLASTIC

This material has been around since the 1940's, GRP normally consists of a Polyester Resin and Glass Reinforcement such as a chopped strand mat. Mannequins have been constructed in this material for many years, this is primarily due to its strong, light and durable properties.

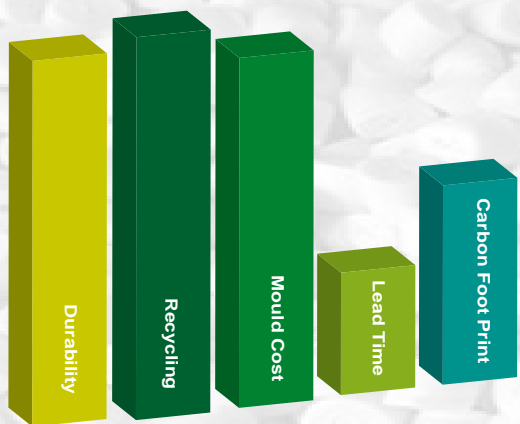
GRP is good for high or low quantities and special products. Good 100 % recycling option re-purposed as a construction infill. It is worth noting that Bio resin has become a good viable alternative to Polyester resin. Open-Loop Cycle



ABS ACRYLONITRILE BUTADIENE STYRENE

There is a high mould cost with ABS, with a minimum order of 150 units. ABS is durable and has recycling options. When ABS is heated it melts, allowing it to be extruded. This means that ABS is reusable and can be recycled. A lot of ABS products are made from recycled material, or have a percentage of recycled material in them.

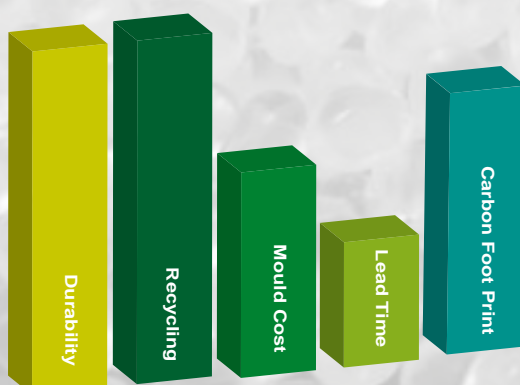
ABS is fairly harmless, there are no known carcinogens in this material and no related health effects have been found from exposure to this plastic. This makes it a safe plastic to use; this is another reason why ABS is so commonly used. Open-loop Cycle. Also see 3D Printing



PU THERMOPLASTIC POLYURETHANES (TPU)

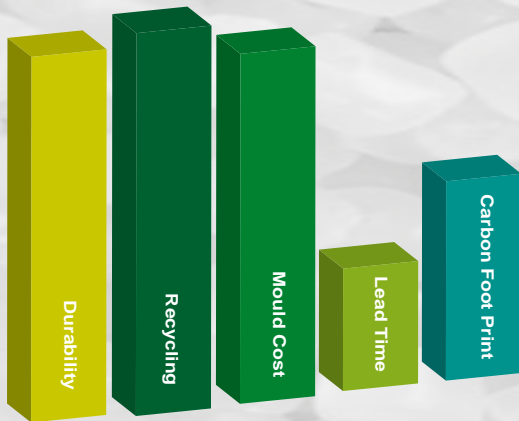
Thermoplastic Polyurethane, TPU can be processed easily via conventional methods like injection moulding, extrusion, blow and compression moulding. PU is easily moulded into shapes with a good life span and has the possibility to be recycled Open-Loop.

Things to consider are the moderately priced tooling of the moulds. TPU is highly durable and has a long life span. Polyurethane is recycled in two primary ways: mechanical recycling, in which the material is reused in its polymer form, and chemical recycling that takes the material back its various chemical constituents.



PE POLYETHYLENE

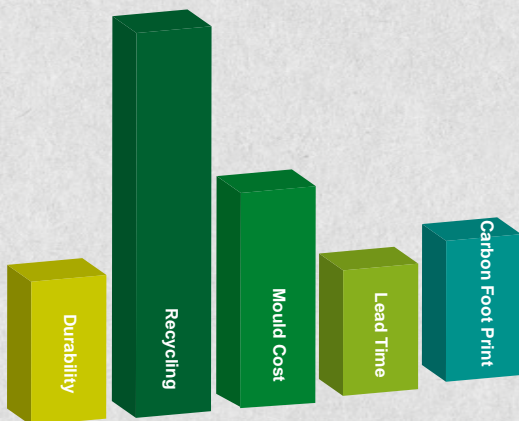
Polyethylene is a thermoplastic polymer with a variable crystalline structure and a vast range of applications depending on the particular type. It is one of the most widely produced plastics in the world. PE has high mould cost and is therefore only recommended for high quantities. The durability is very good, PE has limited possibilities to be recycled. There are a number of species of bacteria and animals that are able to degrade polyethylene. Open-Loop



PAPER

Paper has been used to create products since 200 AD in China, papier-mâché came to Europe in 1725, it wasn't until the mid-19th Century it became popular in France to make Mannequins. 100% Post-Consumer or FSC Paper, is biodegradable but treated correctly can have longevity.

Being paper derived it has low toxicity and is compostable, if it has not been coated in paint. Paper products are more fragile than plastic forms and can be easily damaged if dropped or carelessly handled. Open-Loop & Closed-loop recycling.



3D PRINTS

Good for prototypes, bespoke items and short runs. Filaments can now be used that contain materials of a recycled origin, including wood.

ABS Acrylonitrile Butadiene Styrene Is extruded through a print-head to print products, this process is good for samples and low volume pieces. ABS can be reused and recycled Open-Loop

PLA polyactic acid, PLA is a bioplastic derived from plant-based sources. PLA is biodegradable recyclable Open-Loop

SLA Stereolithography is a common rapid manufacturing and rapid prototyping technology for producing parts with high accuracy and good surface finish. Stereolithography (SLA) resins are liquid UV-curable photopolymers used in this process. Limited options to recycle.

MANUFACTURE

We manufacture our products in various locations around the globe. Our primary sites are the UK and China. In London we have our design studios, renovation workshop, papier-mâché bust production and warehouse. Our China production was established in 2006. There are 14 office staff and 200 factory Staff. All the vehicles in our company fleet are hybrid or fully electric, our plants are all powered by renewable energy.

PRODUCING MATERIALS

All our materials are specially selected from leading manufacturers, we only use materials that are of the highest standard from the bio resins we use to the FSC wood content in our bust forms.

WASTE

All the waste from the manufacture of our products is disposed of by registered waste collectors. In the UK our provider operates a documented management system that fully complies with the requirements of ISO9001 and ISO14001. In China our spray booths and lamination area have ultra violet filaments to reduce pollution and waste entering the atmosphere. Our China factory has its own water treatment plant, all other (China) waste is disposed of by registered waste collectors.

WORKING CONDITIONS

We take the health and safety of our staff very seriously. In the UK and China we are audited by external independent companies to make sure we comply with legislation. All staff have access to PPE when ever they need it. Customers can possibly get a cheaper product, but in doing so they run the risk of exposing themselves to manufacturers where conditions are far from satisfactory and in some cases are just plain dangerous. We proud of our facilities and welcome customers to visit to see first hand.

PAINT

Water-based, options like anti-scratch are also a popular choice. We work with companies that have a commitment to develop more environmentally friendly coatings.

CERTIFICATION

Our London studios and warehouse are externally audited on a yearly basis for Health and Safety, to make sure we are compliant with legislation and we are using the best practice. We have used external auditors for the last 10 years.

Our China facility has been audited by internal auditors from:

H&M

Uniqlo

External audits have been carried out by;

Sedex

SGS

Responsabilitas

FSC certificate for Raffia composite

We have passed the above inspections and are still working on ways to improve.

PRIMARY AND SECONDARY PACKAGING MATERIALS

We have implemented an environmentally friendly means of packaging, reducing 70% of the bubble wrap and foam used.

However, whilst we have the need to reduce the impact on the environment, there is not an adequate replacement for some of the packaging materials used.

It is essential to supply products that are packed well in order to avoid damage.

If products get damaged in transit, sending replacements or having the product returned to us would greatly impact our carbon footprint and is costly to the environment.

TRANSPORTING THE FINISHED PRODUCTS TO ITS DESTINATION.

Where possible, we try to amalgamate all products so that they can be bulk shipped whether domestically or internationally.

Where possible, we ship goods out on pallets. This makes a considerable saving in time, energy and handling. This also allows us to insure greater control against damages.

For domestic and many European deliveries we use the UK's most sustainable delivery company, who's mission statement is to become the greenest delivery company on this planet. They are building the largest fleet of electrical vehicles in the UK. For deliveries in other worldwide countries, we strive to use companies with the same ethos and who have the greatest green credentials.

We are here to help and can take you through all the shipping and storage options available to help you to determine the best and most sustainable option for your business.



RENOVATION



Second life - to extend the life cycle of our, or someone else's, mannequins, forms, etc we offer a full renovation service. We can take old damaged products, replace broken fittings, supply new parts and spray them to any colour or finish, so they look as good as new.

We can also provide makeup and wigs to your desired design.



RECYCLING OF FIBREGLASS

Industries have long been seeking the answer of how to dispose of fibreglass in an environmentally conscious way. We can now offer a service that will bulk dispose of your fibreglass mannequins at a modest price.

The major component of glass fibres and resins can be used in the manufacturing of the valuable raw materials required for the kiln-firing of cement. Fibre composites can also be used in the production of cement, taking a 'zero landfill, zero energy' approach. The cement can then be used in the building of roads, schools, hospitals, housing, as well as decorative applications.

Contact us for more Information

RECYCLING OF PLASTICS

Plastic can be split into two types: thermosets and thermoplastics.

Thermosets are materials that are moulded and then cured into their final forms, and include materials like polyurethane or silicone.

Thermoplastics don't have any curing step, and become pliable or workable after being heated past their melting temperatures. As a result, virtually every type of FDM 3D printer plastic is a thermoplastic.

In theory, most types of thermoplastic can be melted down and recycled, with differing amounts of efficiency and material loss between each type. However, the types of plastics that are processed by recycling plants can vary significantly across the world, or even between different municipalities of the same city!

PLASTIC CLASSIFICATION



PETE

POLYETHYLENE
TEREPHTHALATE

SOFT DRINK BOTTLES,
MINERAL WATER,
FRUIT JUICE
CONTAINERS &
COOKING OIL



HDPE

HIGH-DENSITY
POLYETHYLENE

MILK JUGS,
CLEANING AGENTS,
LAUNDRY DETERGENTS,
YOGURT & BUTTER TUBS
SHAMPOO BOTTLES,
SHOWER GEL



PVC

POLYVINYL CHLORIDE

PLASTIC PACKING
BUBBLE WRAP,
FOOD WRAPS
PLUMBING PIPES



LDPE

LOW-DENSITY
POLYETHYLENE

SHOPPING BAGS,
CLOTHING, CARPETS,
HIGH-RESISTANT
SACKS AND MOST
WRAPPING



PP

POLYPROPYLENE

FURNITURE,
LUGGAGE CASES,
TOYS,
KETCH UP BOTTLES,
SYRUP BOTTLES



PS

POLYSTYRENE

COMPACT DISC CASES,
EGG CARTONS,
MEAT TRAYS,
DISPOSABLE PLATES
AND CUPS



OTHER

ACRYLIC
POLYCARBONATE
NYLON, FIBREGLASS

SUNGLASSES,
IPOD CASE,
NYLON WATER BOTTLES
COMPUTER CASES

CONCLUSION

As you can see, there are a vast range of materials that are sustainable and that can be recycled.

We continue to invest heavily in R&D to make sure that we deliver what our clients need and require. We pride ourselves on delivering products that are what they say they are.

Many claim they can produce bio resin mannequins, but like many headlines when you examine the claims the bio mass in these products is at a very low level.

We are here to help and can advise on what type of material would suit your future needs and budget. Whether you are a small boutique with a requirement for a few mannequins or a multinational corporation who requires volume.

From design to manufacture and shipping, we have a solution to help you reach your sustainable goals.

We are continuously evolving, researching and working to find the best options for your business and our future generations.

HOW CAN WE HELP YOU?



Universal Display

Universal Display Fittings Co. Ltd
Unit 4 95 Victoria Road
London
NW10 6DJ
United Kingdom
Tel: 020 8206 5010
info@universaldisplay.co.uk
www.universaldisplay.co.uk

Universal Display & Design Inc.
368 9th Avenue
New York
NY 10001
USA
Tel: 212 242 0374
info@universaldisplayusa.com
www.universaldisplayusa.com